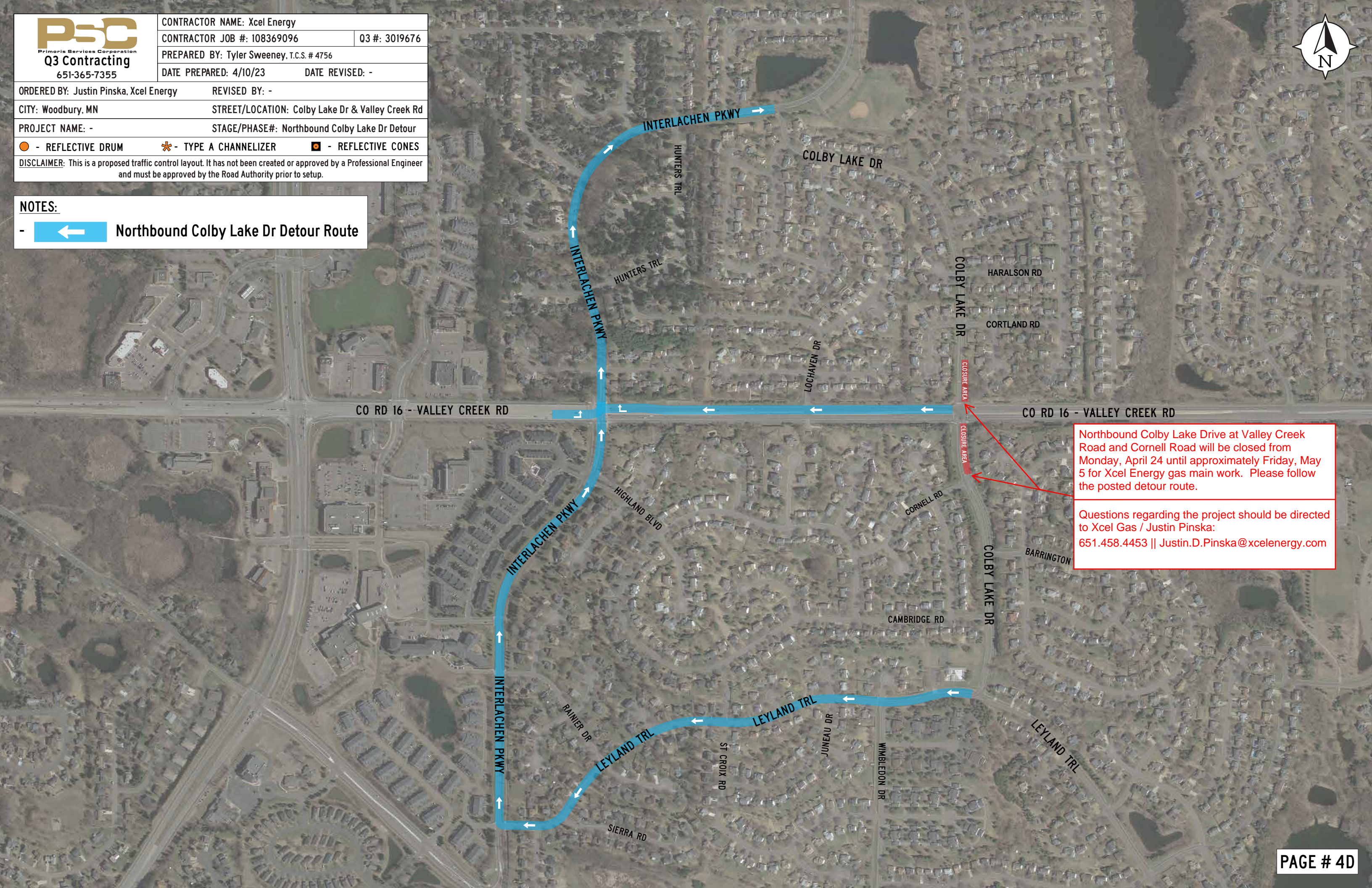




ORDERED BY: Justin Pinska, Xcel Energy	REVISED BY: -
CITY: Woodbury, MN	STREET/LOCATION: Colby Lake Dr & Valley Creek Rd
PROJECT NAME: -	STAGE/PHASE#: Northbound Colby Lake Dr Detour
● - REFLECTIVE DRUM	* - TYPE A CHANNELIZER
◼ - REFLECTIVE CONES	
DISCLAIMER: This is a proposed traffic control layout. It has not been created or approved by a Professional Engineer and must be approved by the Road Authority prior to setup.	

**NOTES:**  
- Northbound Colby Lake Dr Detour Route



Northbound Colby Lake Drive at Valley Creek Road and Cornell Road will be closed from Monday, April 24 until approximately Friday, May 5 for Xcel Energy gas main work. Please follow the posted detour route.

Questions regarding the project should be directed to Xcel Gas / Justin Pinska:  
651.458.4453 || Justin.D.Pinska@xcelenergy.com