

Trails at Tamarack Nature Preserve

Woodbury, MN

Evergreen West Park
 1033 Tamberwood Trl
 Woodbury, MN 55125

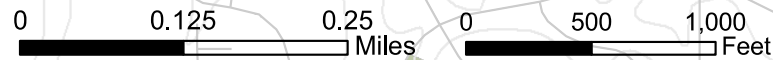


Legend:

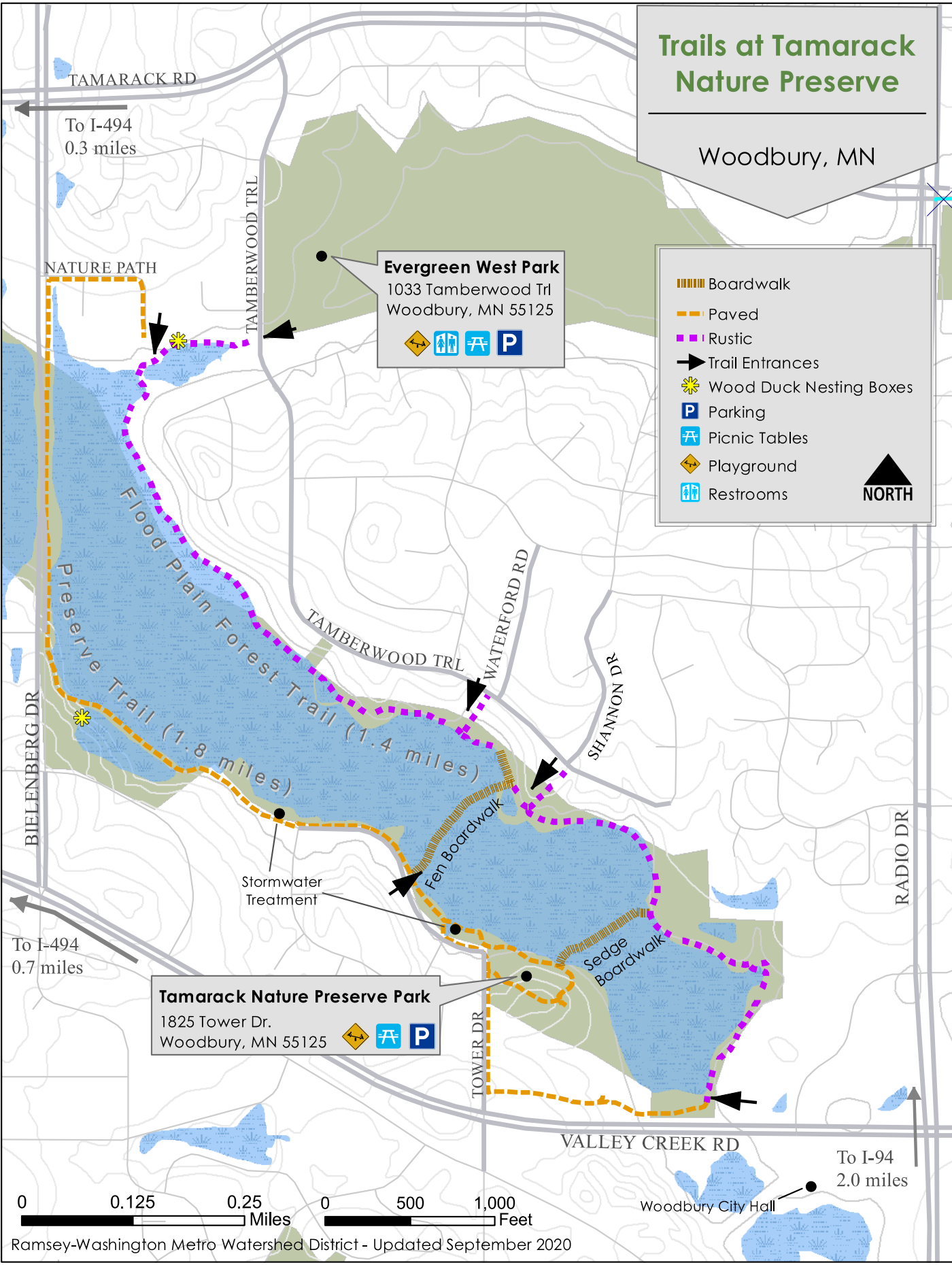
- Boardwalk
- Paved
- Rustic
- Trail Entrances
- Wood Duck Nesting Boxes
- Parking
- Picnic Tables
- Playground
- Restrooms

NORTH

Tamarack Nature Preserve Park
 1825 Tower Dr.
 Woodbury, MN 55125



Ramsey-Washington Metro Watershed District - Updated September 2020



About the Tamarack Nature Preserve

This 169-acre preserve contains a bog-like "rich fen" formed during the last glacial retreat over 10,000 years ago. Visit this remnant of Minnesota's southernmost tamarack swamp to see plant communities once widespread in pre-settlement days. Walk the perimeter trails. Cross the fen on boardwalks.

Trail Highlights

Preserve Trail

1.8 miles one-way

Rolling Terrain • Mostly Paved • Stairs

Open views from the developed perimeter. Watch for floating hummocks in the cattail marsh. Look for migratory & resident birds including wood ducks that have used the installed nesting boxes.

Flood Plain Forest Trail

1.4 miles one-way

Rolling Terrain • Rustic • Seasonally maintained

Enjoy a rustic walk through the woods. Short sections may be wet.

Sedge Boardwalk

600 feet one-way

Flat • Boardwalk • Handicap accessible

Keep your feet dry while crossing the wetland. Spot tamarack trees growing out of mounding hummocks.

Fen Boardwalk

780 feet one-way

Flat • Boardwalk • Rustic

Cross the fen to spot the dozens of unique plants identified in iNaturalist.

More resources to explore

- Identify migratory and resident birds using the eBird app. Over 100 species are listed on the [eBird Field Checklist for the Tamarack Nature Preserve](#)
- Identify the unique plants. Use [iNaturalist](#) to find locations and identities of plants recorded in the app's "Tamarack Nature Preserve in Woodbury, Minnesota" project.
- Protect the Preserve! Untreated stormwater run-off carries sediment and excess nutrients from grass clippings, pet waste and leaf litter into the Preserve. The nutrients enable the non-native plants to outgrow and crowd-out slower growing species like the tamarack tree. To protect the Preserve, the [Ramsey-Washington Metro Watershed District](#) installed two treatment ponds along Woodpark Blvd. These look like ponds with a brick bottom. Water can soak into the ground, but the bricks provide enough support for equipment to clear out the accumulated sediment.
- To learn more about the Preserve, visit tamaracknaturepreserve.org
- [Tour the Preserve virtually.](#)