

2020 Roadway Rehabilitation Project

Phase 1 Construction Notice- Full Curb Replacement Area

April 24, 2020

Construction Starts May 4	Duration 6 weeks	Description of Work Full curb street
--	-----------------------------------	---

Anticipated Construction Timeline *(subject to change)*

1. **May 4-8:** Saw-cutting driveways and mailbox removal in the full curb removal areas.
2. **May 11-13:** Lowering structure covers and gate valves.
3. **May 11-13:** Removal of the existing pavement on all streets.
4. **May 13-15:** Concrete curb and driveway removal.
5. **May 15-19:** Concrete curb placement is scheduled to occur on phase 1 streets, full & spot curb areas.
6. **May 18-21:** Concrete driveway aprons are scheduled to be placed 1-2 days following the placement of concrete curb. Please note that new concrete cannot be driven over until the contractor removes ribbon across driveway (about 5 days after placement). The contractor will not warranty concrete that has been driven on prior to the contractor removing ribbon.
7. **May 21-25:** Asphalt driveway patching
8. **May 25-29:** Grading of street in preparation of paving.
9. **May 29-June 2:** Pave first of two layers of pavement. Pavement can be driven on about 30 minutes after placement.
10. **June 2-5:** Complete topsoil and seed placement, raise existing structures within the street to the final pavement height
11. **June 5-9:** The top layer of pavement will be placed. Pavement can be driven on about 30 minutes after placement.

Protecting your sprinkler systems, invisible fence, and landscaping

If you wish to protect your private features from damage during construction, please temporarily remove them from the City right of way area that will be impacted by construction (about 3-5ft behind the curb marked for removal). Sprinkler heads can be disconnected and the hose can be dug up and pulled back. Please protect all private features (Irrigation system, dog fence, landscaping, etc) behind the entire length of curb in full-curb removal areas.



Any damage to private features in the right of way will not be repaired, replaced, or altered by the city or the contractor.

Street and driveway parking during construction

Parking will NOT be allowed on streets throughout construction between 7:00 AM and 7:00PM.

Construction operation	Where to park
Pavement removal	<ul style="list-style-type: none"> Between 7:00AM and 7:00PM Park in driveway or along Timberwood Road or Timberwood Court.
Concrete Removal and Concrete Placement	<ul style="list-style-type: none"> Between 7:00AM and 7:00PM park along Timberwood Road or Timberwood Court. Residents will not have vehicle access their driveways during this portion of the project, and ribbon or barricades will be placed across your driveway. You will be able to access your driveways after the new concrete has reached sufficient strength for vehicle traffic. At that time all ribbon and barricades blocking access will be removed. <i>If you require special accommodations, please contact the project hotline</i>
Grading and Paving Operations	<ul style="list-style-type: none"> Between 7:00AM and 7:00PM no parking will be allowed on the street. Residents should park in their driveway as soon as ribbon across driveway has been removed by contractor or along Timberwood Road and Timberwood Court.

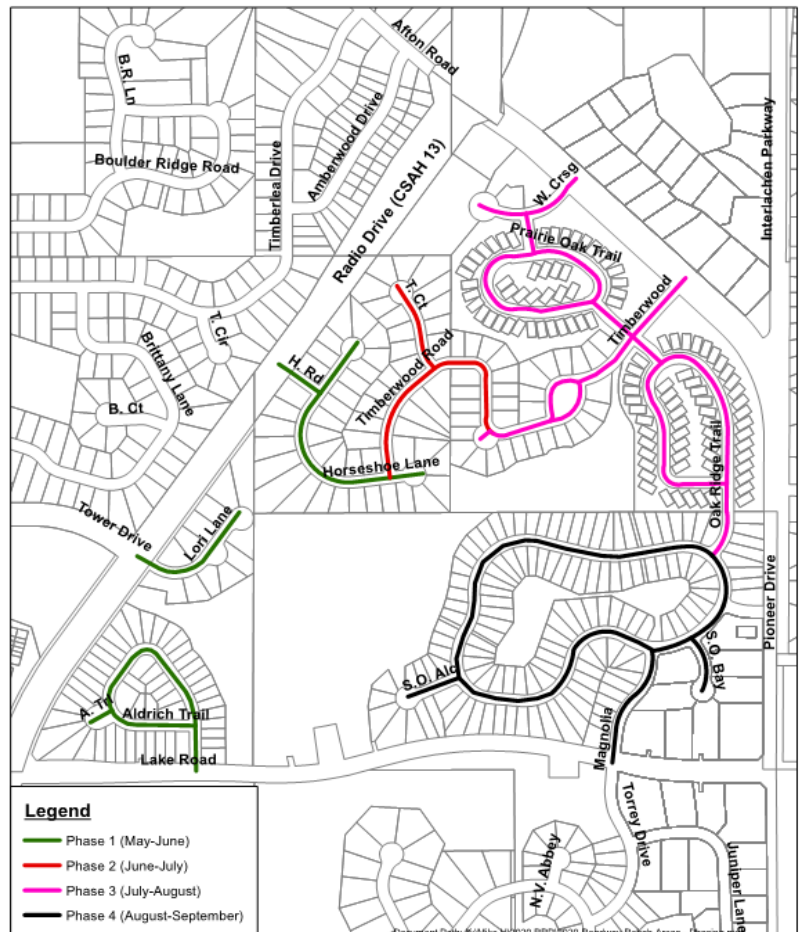
Garbage and mail service

Garbage service will remain on same day throughout construction.

Temporary mail boxes will be provided for full curb removal residence within phase 1 on Timberwood Road north of Horseshoe Lane.

Stay Informed

If you have any questions or concerns, please contact the project hotline or project email. Weekly InTouch email blasts will be sent with project updates. You can sign up for InTouch updates by visiting the city's website at woodburymn.gov/InTouch and selecting the Road Rehabilitation 2020 list.



Hotline
(612) 430-2805



Project Email
woodbury2020@bolton-menk.com



InTouch Updates
Every Week