

# 2020 Roadway Rehabilitation Project

## Phase 2 Construction Notice- Full Curb Replacement Area

May 27, 2020

<b>Construction Starts</b> <b>June 1</b>	<b>Duration</b> <b>4 weeks</b>	<b>Description of Work</b> <b>Full curb street</b>
---------------------------------------------	-----------------------------------	-------------------------------------------------------

### Anticipated Construction Timeline *(subject to change)*

1. **May 27-28:** Lowering structure cover castings and gate valves.
2. **June 1:** Removal of the existing pavement.
3. **June 2-3:** Concrete curb and driveway removal.
4. **June 4-5:** Concrete curb placement is scheduled to occur on phase 2 streets.
5. **June 5-9:** Concrete driveway aprons are scheduled to be placed 1-2 days following the placement of concrete curb. Please note that new concrete cannot be driven over until the contractor removes ribbon across driveway (about 5 days after placement). The contractor will not warranty concrete that has been driven on prior to the contractor removing ribbon.
6. **June 10-12:** Asphalt driveway patching
7. **June 15-17:** Grading of street in preparation of paving.
8. **June 18:** Pave first of two layers of pavement. Pavement can be driven on about 30 minutes after placement.
9. **June 19-24:** Complete topsoil and seed placement, raise existing structures within the street to the final pavement height
10. **June 25:** The top layer of pavement is scheduled to be placed. Pavement can be driven on about 30 minutes after placement.

### Protecting your sprinkler systems, invisible fence, and landscaping

If you wish to protect your private features from damage during construction, please temporarily remove them from the City right of way area that will be impacted by construction (about 3-5ft behind the curb marked for removal). Sprinkler heads can be disconnected and the hose can be dug up and pulled back. Spot curb areas will have white areas painted on curb marked for removal. Please protect features within this area. Please protect features behind the entire length of curb in full-curb removal areas.



***Any damage to private features in the right of way will not be repaired, replaced, or altered by the city or the contractor.***

## Street and driveway parking during construction

Parking will be allowed on streets throughout construction between 7:00PM and 7:00AM.

Construction operation	Where to park
Pavement removal	<ul style="list-style-type: none"> <li>Between 7:00AM and 7:00PM Park in driveway or along Horseshoe Lane or the phase 3 portion of Timberwood Road.</li> </ul>
Concrete Removal and Concrete Placement	<ul style="list-style-type: none"> <li>Between 7:00AM and 7:00PM park along Horseshoe Lane or the phase 3 portion of Timberwood Road. Access to driveways will be closed during this portion of the project and ribbon or barricades will be placed across your driveway. You will be able to access your driveways after the new concrete has reached sufficient strength for vehicle traffic. At that time all ribbon and barricades blocking access will be removed.</li> <li><i>If you require special accommodations, please contact the project hotline</i></li> </ul>
Grading and Paving Operations	<ul style="list-style-type: none"> <li>Between 7:00AM and 7:00PM no parking will be allowed on the street. Parking in driveway as soon as ribbon across driveway has been removed by contractor or along Horseshoe Lane or phase 3 portion of Timberwood Road.</li> </ul>

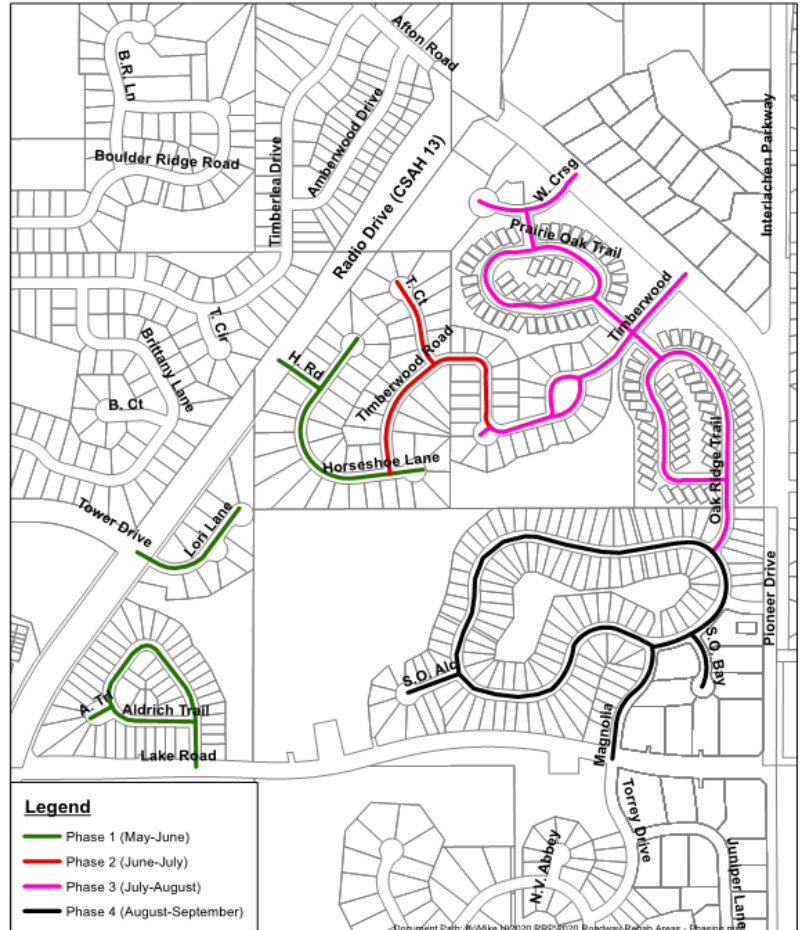
### Garbage and mail service

Garbage service will remain on same day throughout construction.

Temporary mailboxes will be provided for full curb removal residents within phase 2 on Timberwood Road near the grass island.

### Stay Informed

If you have any questions or concerns, please contact the project hotline or project email. Weekly InTouch email blasts will be sent with project updates. You can sign up for InTouch updates by visiting the city's website at [woodburymn.gov/InTouch](http://woodburymn.gov/InTouch) and selecting the Road Rehabilitation 2020 list.



**Hotline**  
(612) 430-2805



**Project Email**  
[woodbury2020@bolton-menk.com](mailto:woodbury2020@bolton-menk.com)



**InTouch Updates**  
Every Week