



2020 Roadway Rehabilitation Project

July 10, 2020 Update

All schedules are weather permitting.

Phasing map available on following page.

Phase 1

- Restoration work is scheduled to continue.

Phase 2

- Restoration work is scheduled to continue.

Phase 3

- Crews are scheduled to pave the base layer, followed by topsoil and restoration work and trail work in specific areas.

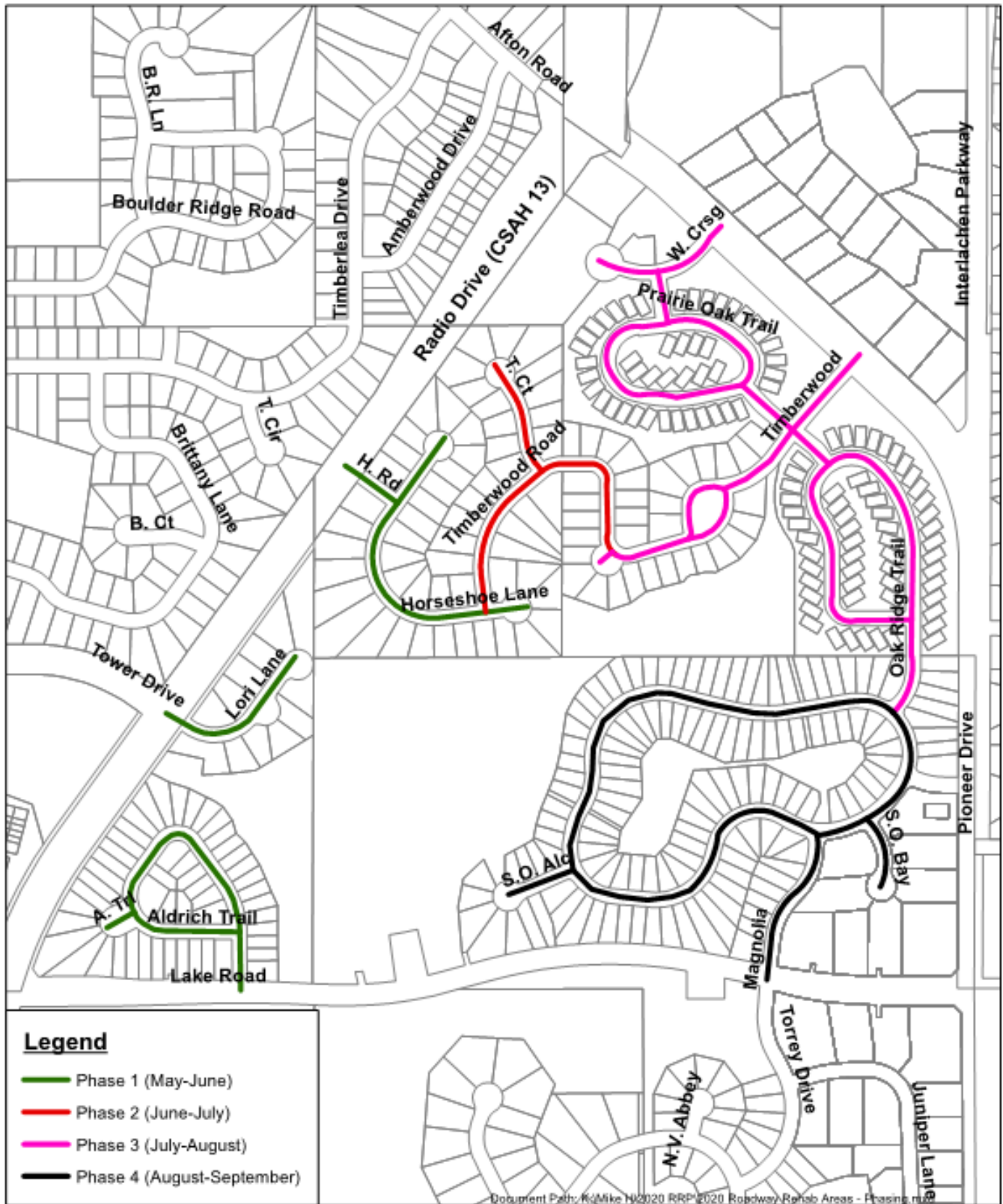
Phase 4

- Phase 4 work is scheduled to begin on July 20th.

Questions?

Questions can be directed to the project hotline at (612) 430-2805.

Phasing Map



8301 Valley Creek Road • Woodbury, Minnesota 55125-3330
 (651)714-3593 • TDD (651)714-3568 • FAX (651)714-3501

