

2020 Roadway Rehabilitation Project

August 21, 2020 Update

All schedules are weather permitting.

Phasing map available on following page.

Phase 1 and Phase 2

- Crews will continue corrective restoration work Tuesday and Wednesday.

Phase 3

- Crews will continue watering restoration areas and addressing weed control.

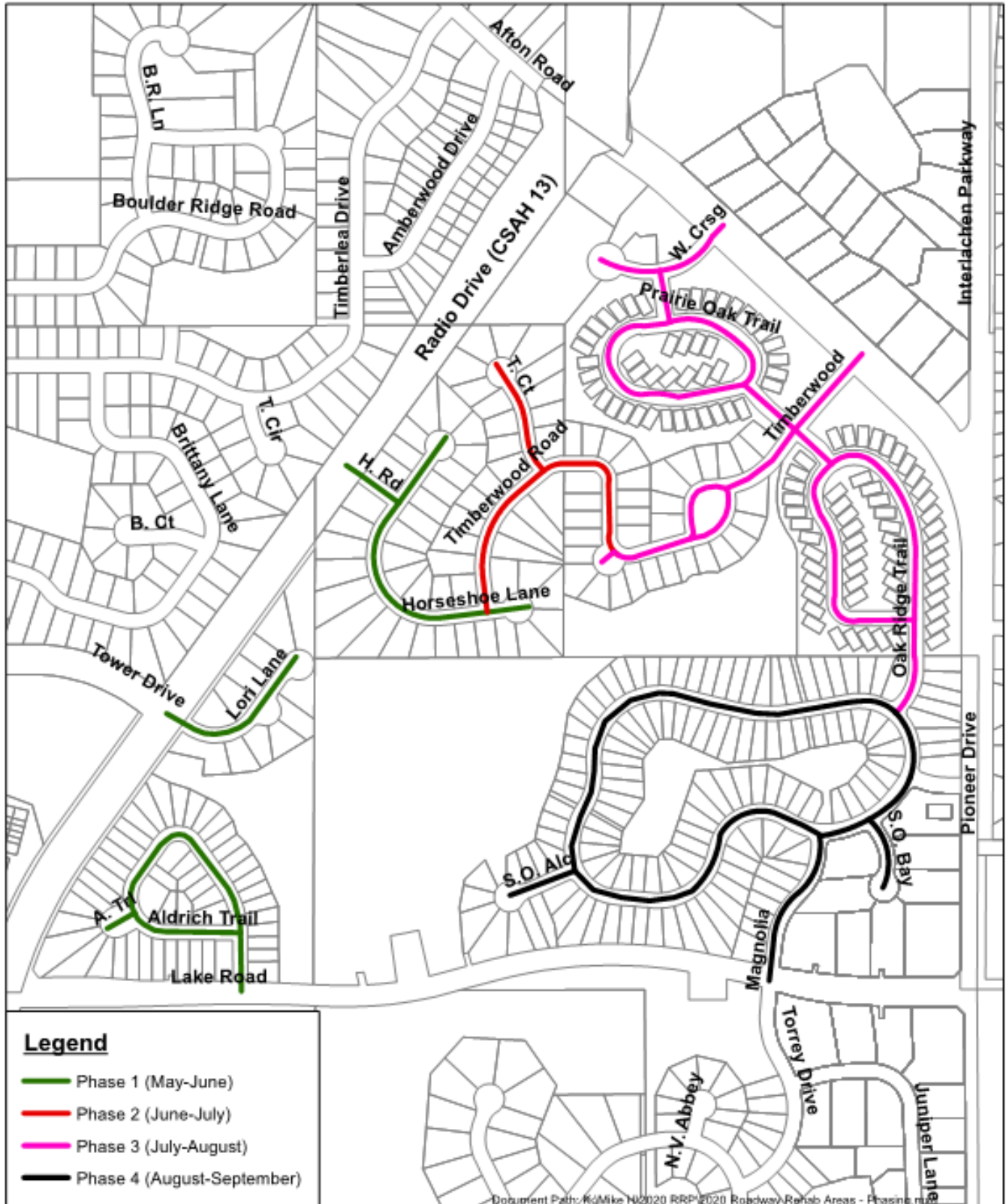
Phase 4

- Seeding and restoration is scheduled to occur Monday.
- Street patching is scheduled to occur Monday and Tuesday.
- The final layer of pavement is scheduled to be paved Thursday and Friday, weather permitting. No parking is allowed on the streets during paving. New pavement can be driven over about when it cools, which is about 20 minutes after placement.

Questions?

Questions can be directed to the project hotline at (612) 430-2805.

Phasing Map



Document Path: R:\Mike H\2020 RRP\2020 Roadway Rehab Areas - Phasing.mxd
 6501 Valley Creek Road • Woodbury, Minnesota 55125-5530
 (651)714-3593 • TDD (651)714-3568 • FAX (651)714-3501