

2020 Roadway Rehabilitation Project

August 28, 2020 Update

All schedules are weather permitting.

Phasing map available on following page.

Schedule for Week of August 31 – September 5

Phase 1 and 2: Weed removal and reseeding is scheduled to occur next week.

Phase 3: Crews have addressed the weeds and are letting the grass have more time to grow and take over. Weeds will be removed prior to turf acceptance.

Phase 4: The final layer of pavement is scheduled to be placed early to middle of next week. No parking is allowed on streets during paving. Vehicles will be able to drive over new pavement about 30 minutes after placement. Watering and addressing the weeds will continue.

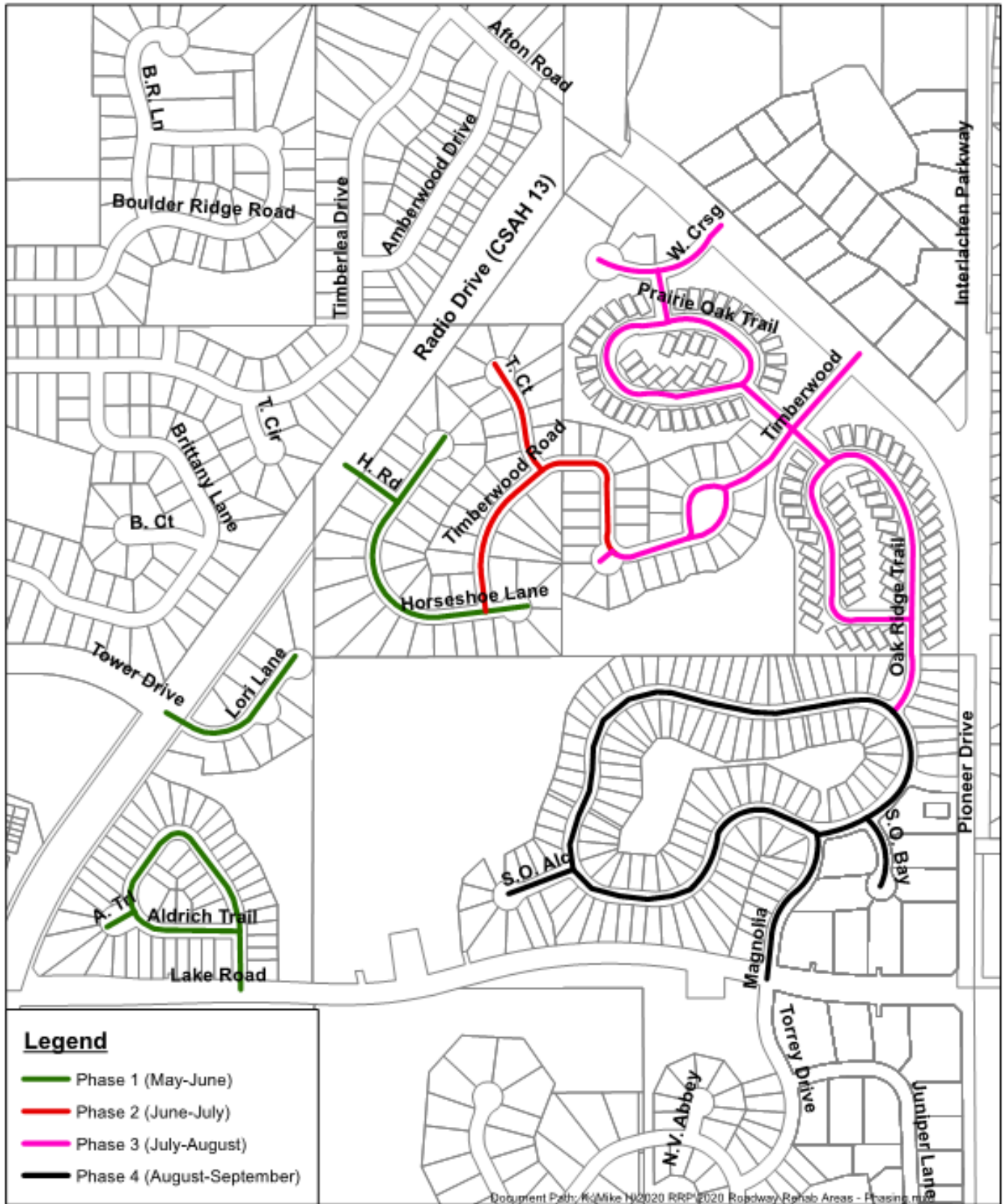
Questions?

Questions can be directed to the project hotline at (612) 430-2805.

Phasing Map

8301 Valley Creek Road • Woodbury, Minnesota 55125-3330
(651)714-3593 • TDD (651)714-3568 • FAX (651)714-3501





8301 Valley Creek Road • Woodbury, Minnesota 55125-3330
 (651)714-3593 • TDD (651)714-3568 • FAX (651)714-3501

